

**world.**  
JOURNEYS

A photograph of two squirrel monkeys on a tree branch. The monkey on the left is sitting and holding a piece of green fruit in its mouth. The monkey on the right is standing on its hind legs, reaching out with its mouth open towards the fruit. The background is a soft, out-of-focus green forest.

# YOUR GUIDE TO THE AMAZON

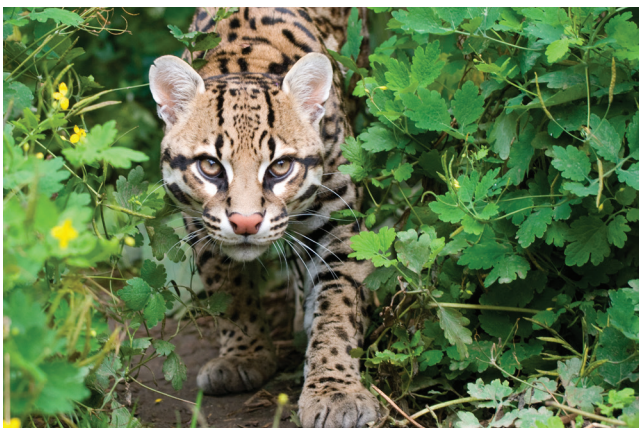


# ABOUT THE AMAZON

*The Amazon is home to some of the most unique flora and fauna in the world with roughly 10 million species of animals, insects and plants. Base yourself in a jungle lodge or take a boat cruise to explore the Amazon in comfort and style.*

## Where is the Amazon?

The Amazon is spread over nine countries, with Brazil accounting for the majority of rainforest within its borders. Around 60% of the Amazon's land area is in Brazil, 13% is in Peru, then Ecuador, Bolivia, Guyana, Venezuela, Suriname and French Guiana make up the balance. Parts of the Amazon River are up to 20km wide at its mouth.



## The “lungs of the planet”

The Amazon contributes 6% of the world's total oxygen production. Although this portion may appear small, the rainforest is considered an important net source of oxygen today - which is probably why the term “lungs of the planet” is still used.

This, combined with its rich biodiversity, and diverse cultures, makes it a truly special place to visit.



# WHEN TO GO AND WHAT TO SEE

## *The wildlife*

The Amazon is home to an incredible array of wildlife, from pink dolphins to caiman, tapir, ocelots, various monkeys, giant river otters, and vibrant, colourful birdlife.

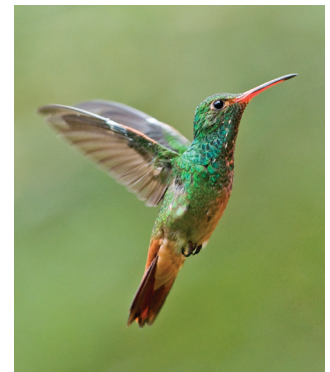
Although the wildlife can be elusive, it's also a great place to spot a diverse range of plants and smaller species not seen elsewhere, including frogs, insects and reptiles.

## *Local communities*

As well as being the largest rainforest in the world, the Amazon is home to many native tribes, all with their own culture, history, language and unique way of life.

## *National Parks*

The Amazon contains biologically diverse National Parks, including Yasuni National Park in Ecuador, Peru's Manu National Park, and a range of parks close to Manaus in Brazil.



## *Low water season (May - November)*

The Amazon is a rainforest and while there is still rain during the dry months, it is much less than in the wet season. The river levels are lower, making the paths more accessible, allowing a deeper exploration of the jungle on foot. Dozens of species of migratory birds can also be spotted during this period.

## *High water season (December - April)*

The wet season is cooler and wetter which means the average water level in the Amazon and its main tributaries is 7 metres higher than the 'dry' season', making the rivers much more navigable and ideal for those wanting to explore the Amazon by small ship. You are also closer to the jungle canopy making it a little easier to spot mammals and birds.





# HOW TO EXPERIENCE THE AMAZON

The Amazon is one of the most unique and precious places on earth, but deciding where and how to best experience it can be a challenge. Home to immensely diverse flora and fauna, this veritable Garden of Eden boasts more than 30,000 plant species, 1,800 fish species, more than 1,300 different birds and 311 species of mammals. Too many numbers? Let's narrow down your choices to the three absolute best places to experience it all.

---

## BRAZIL

Brazil's vast Amazonian region is accessible on a cruise out of Manaus, an interesting city with its magnificent Opera House. The M/Y Tucano offers a small ship expedition-style cruise. Head up the Rio Negro to encounter pink dolphins, or caiman spotting at night, and the "Meeting of the Waters" where the black water of the Rio Negro meets the brown water of the River Solimoes.



---

## ECUADOR

Wildlife enthusiasts should head for Ecuador to combine the Amazon, the Cloud Forest and the Galapagos Islands. We recommend Sacha Lodge in the Amazon with its forest trails, treetop observation tower, bird walk and dug-out canoe excursions to the parrot clay licks. Located within a private ecological reserve, guests can relax in carefully designed thatched cabins with private bathrooms, fans and hammocks on a shaded terrace.

---

## PERU

The Peruvian Amazon is perfect to combine with a trip to Machu Picchu. Cruise from Iquitos with Delfin Cruises and discover incredible birdlife, pink dolphins, river otters and howler monkeys. The ships accommodate between 8 to 41 people, offering the epitome of comfort and style, expert naturalist guides and excellent service.

Those not into cruising can enjoy an eco-lodge experience at the Inkaterra Reserva Amazonica set deep in the Tambopata Reserve, with a Canopy Walkway for a completely different perspective, and a riverside spa to relax in after jungle walks.

---

**PLEASE CONTACT YOUR TRAVEL PROFESSIONAL**